



INFORMED

Bierbusse/Boyle 6th Grade News

Vol. 4, Issue 11, November 28, 2011

Book Fair is this week!

Visit the Chatfield web site: www.chatfieldschool.org

IMPORTANT NEWS



- **Pictured Rocks National Lakeshore Trip...** Permission slips and deposits are past due. Please turn it in ASAP. A payment plan has been arranged. The next payment is due: February 27, \$60.
- **Great Lakes Ecosystem Field Guide Project...** This week, students will continue researching organisms for their field guide. They are creating a field guide containing living organisms found in a specific Great Lakes ecosystem. A rubric was passed out to students explaining what should be included in the field guide. You have access to a copy of the rubric on our sixth grade web page at www.chatfieldschool.org.
Field guides are due Wednesday, December 14.
- **Save the Date...** On December 16 a pancake dinner is scheduled to support the Monschau family. The dinner will be held in the Chatfield gym. More information to follow in the next couple of weeks.
- **Book Fair Dance...** Scheduled for Thursday, December 1, 6-8 p.m. The Book Fair will be open Monday-Thursday until 4:30. Friday until noon.



STOP
THE BULLYING.

PASS IT ON!

See It. Hear It. STOP IT.

Anti-Bully ASSEMBLY
Students in Grades 5-8

Scheduled for Thursday, December 1st
9am in the Middle School Commons

Tom Harrison describes his son Alex as a strong, quiet person. But in February 2009 his strength was not enough to withstand the persistent cruelty of his peers at Cadillac High School. Alex Harrison took his own life at the age of 16. His father is now on a mission to convince teenagers that they are the ones who can prevent these tragedies. Mr. Harrison will share his positive message with our students. Parents and community members are invited to attend.

More information can be found at:
See It. Hear It. STOP IT.org.

CLASSROOM CORNER

Students attend math every day. Each day your child will receive a math assignment. Please check your child's planner to stay informed on what lesson your child is completing.

In Social Studies, students will explore maps of the Western Hemisphere. Additionally, they will identify ways to divide the Western Hemisphere into regions. Students are expected to sketch by memory an outline map of the Western Hemisphere and identify its regions.

In Science, students will continue researching organisms to include in the Great Lakes Ecosystem Field Guide. Additionally, students will be introduced to our Solid Earth Unit. This unit includes a study of the three different types of rocks: igneous, sedimentary and metamorphic. It also includes a study of volcanoes, earthquakes, weathering, erosion and landforms. This week, students will view a portion of the movie, "Dante's Peak" (see the attached handout for more information) and read for information about volcanoes.

In English Language Arts students will begin reading the novel, Tuck Everlasting, by Natalie Babbitt. Students will read, respond and discuss the text to improve reading comprehension and fluency skills. **Students have begun an independent novel study to practice comprehension and fluency skills. The majority of the study will be completed at home as reading homework. Students are expected to read a certain number of pages from their novel and complete a "Day" in their study packet each week. Novels are selected from our sixth grade novel collection. Day 6 is due December 5. Library will be on Tuesday.**

Over the next couple of weeks students will refine their writing skills by participating in various writing lessons while composing a well written narrative. This week, students will learn how to compose an effective lead to a narrative.

Home-School Connection Feel Free to Contact Us!

Mrs. Bierbusse: (810) 538-1726 or e-mail:
jbierbusse@chatfieldschool.org

Mrs. Boyle: (810) 538-1725 or e-mail:
tboyle@chatfieldschool.org



Tuck Everlasting Vocabulary

These words are the start of a new vocabulary list. Starting next week, students will need to know the vocabulary words from previous weeks, so that on Friday they are successful at completing the cumulative assessment.

Accessible: Capable of being reached; usable for access

Bovine: Relating to cow or oxen

Oppressive: Overwhelming or depressing to the spirit; burdensome

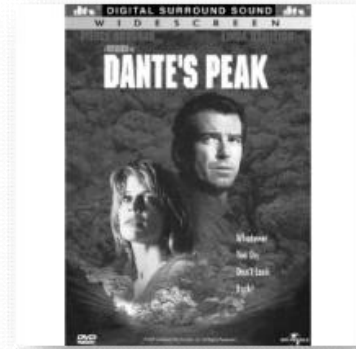
Tangent: A change of course; a straight section of a road or railroad

Tranquil: Mild; soothing

Students should be ready for a quiz on Friday, December 2.

November 18, 2011

Dear Parents:



As part of our Solid Earth unit of study students will view the last 45 minutes of the movie, "Dante's Peak". The movie is rated PG-13. The last 45 minutes provide an excellent account of a volcanic eruption. Other than some intense scenes involving a geologist, two children and their mom trying to reach safety and one mild swear word, the last 45 minutes do not contain anything obscene.

If you would **NOT** approve of your child viewing a portion of this movie, please complete the form below. We will provide a supplementary assignment for them to complete in another room.

If you approve, **you do not** need to complete the form below. A portion of the movie will be viewed the week students return from Thanksgiving break.

Thank You,

The Sixth Grade Team



"Dante's Peak"

I do not approve of my child, _____, viewing the movie, "Dante's Peak". I understand my child will receive a supplementary assignment.

Parent Signature: _____ Date: _____